



广东社工双百计划

# Service Experiences Sharing of “Double-Hundred Project” in Guangdong for Vulnerable Groups in the COVID-19 Pandemic

Social Work Station in Waihai Street and

Liyue Town of Jiangmen City

April 3rd, 2020

培育一线社工  
服务社区民众



# CONTENT

1. Foundations and Advantages of “Double-Hundred Project” in the COVID-19 Pandemic
2. Two Cases in the Pandemic
3. Impacts of the Pandemic on Vulnerable Groups in the Community
4. How We Work in the Pandemic
5. Our Reflections





# Foundations and Advantages of “Double-Hundred Project” in the COVID-19 Pandemic

We established sound relations between the government and the community with good mass foundations, having a good grasp of residents in the community, especially the vulnerable groups, by taking root in the community, offering community services and promoting its development.





# Two Cases in the Pandemic

Waihai Social Work Station  
Love Has No Boundaries—A Case of  
Critical Intervention in the Pandemic

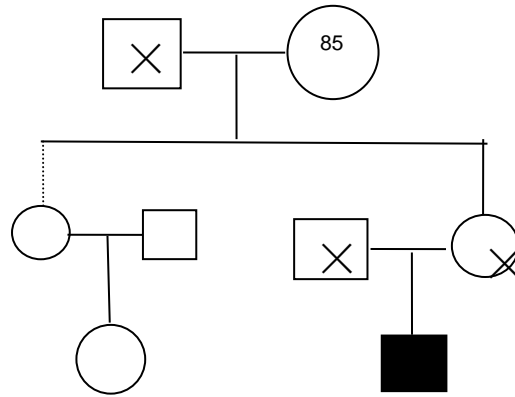


Liyue Social Work Station  
Deep Love with Short Words—A Case of Emergency  
Intervention for Juveniles in the pandemic

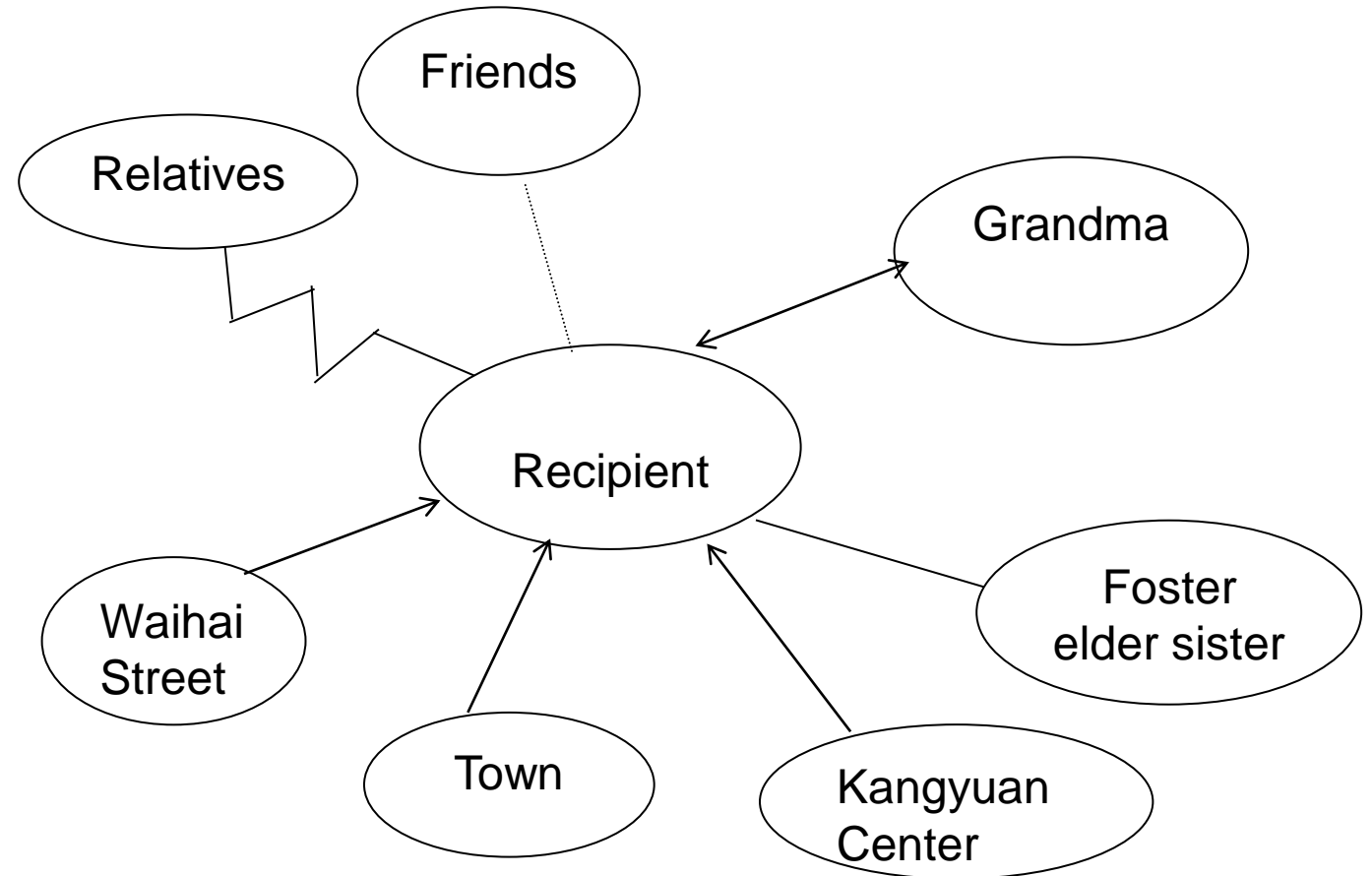




# A Case of Critical Intervention in the Pandemic in Waihai Social Work Station

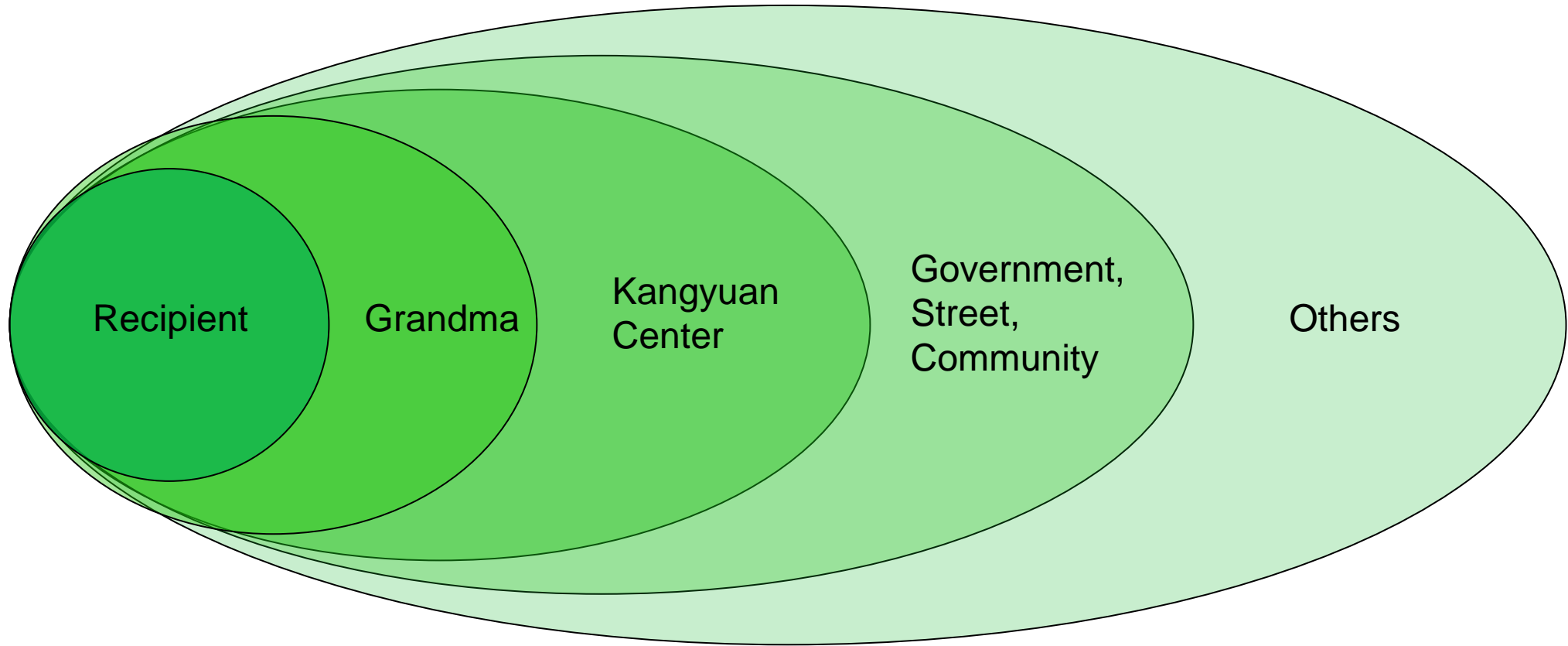


Family Structure diagram





# Case Map

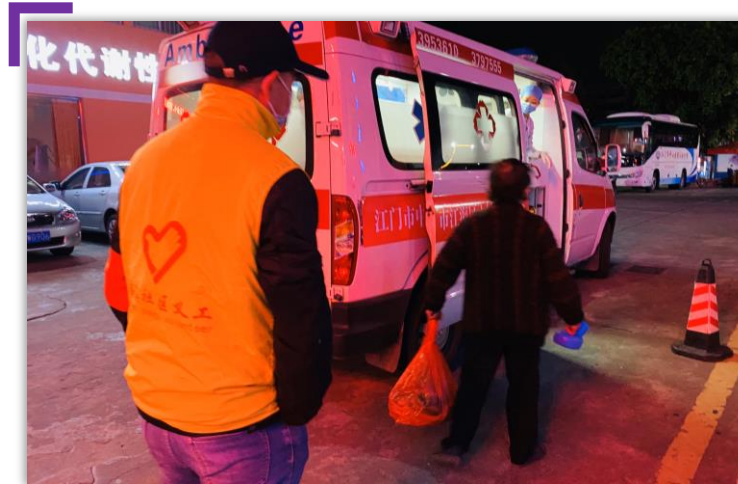


# Emergency Intervention Case



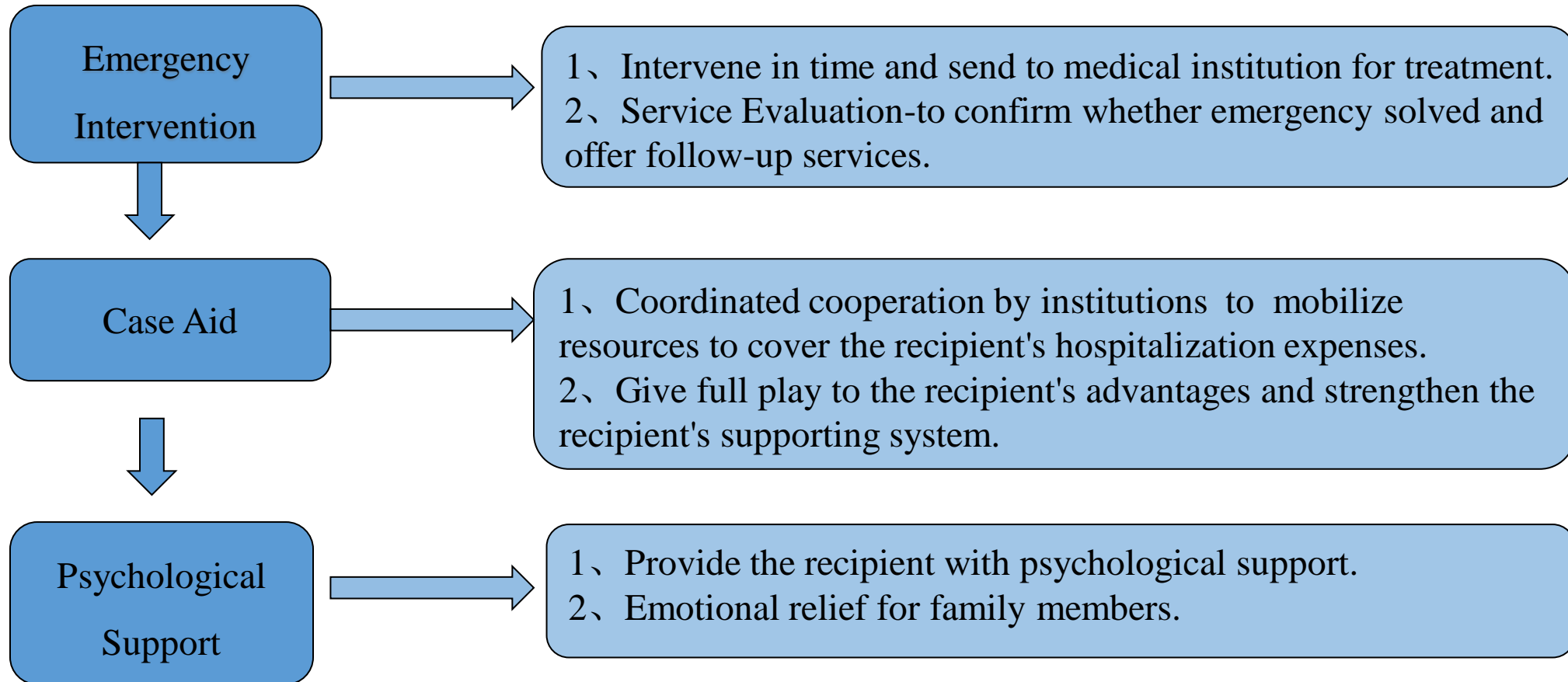
Social workers accompanied the recipient to the fever clinic.

In the early morning, social workers sent the recipient to the city central hospital for emergency treatment.



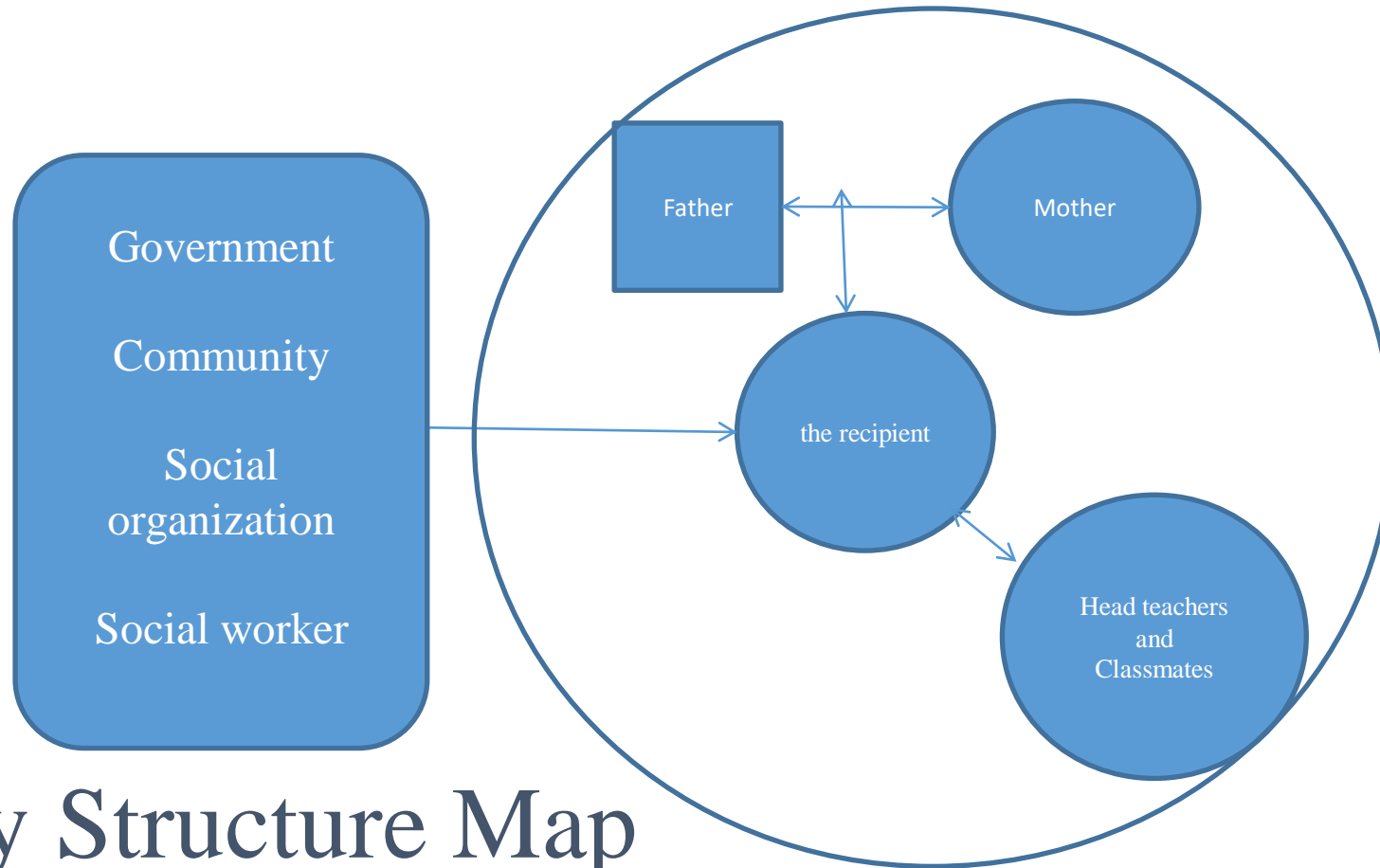


# Service Strategy (Procedures)





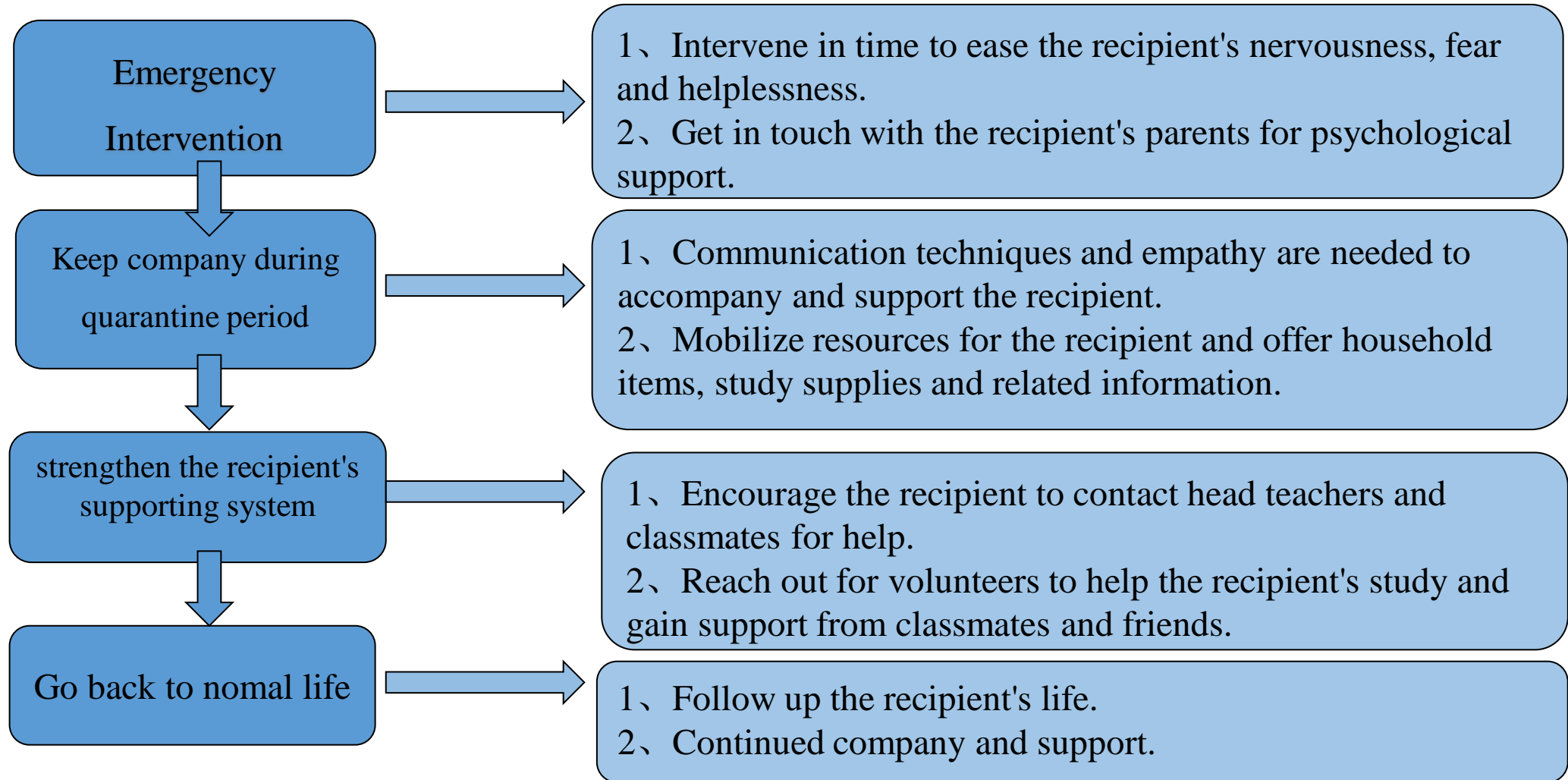
# A Case of Emergency Intervention in Liyue Social Work Station

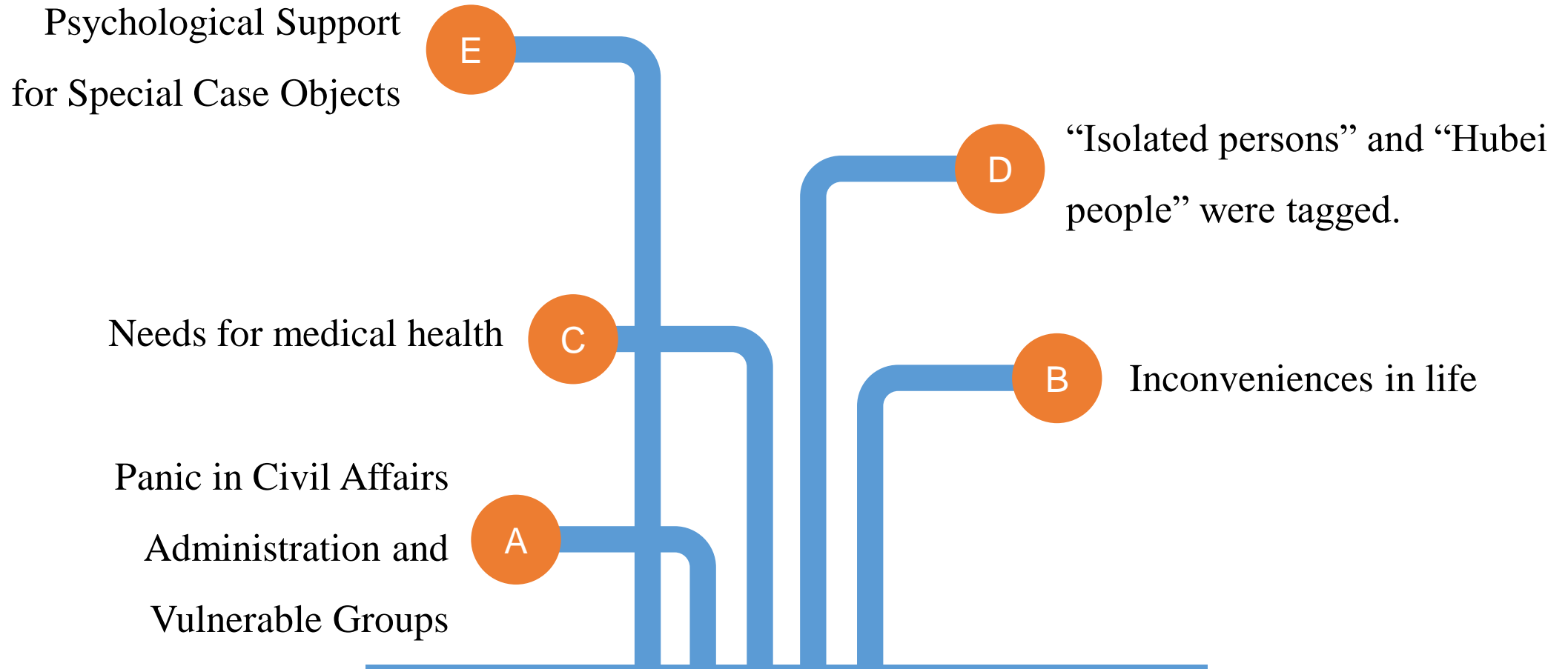


## Family Structure Map



# Service Strategy (Procedures)



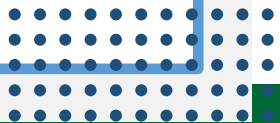


## Impacts of the Pandemic on Vulnerable Groups in the Community



## How We Work in the Pandemic

- Provide epidemic prevention education for vulnerable groups and introduce health knowledge about the COVID-19 to them.
- Distribute anti-epidemic items to vulnerable groups according to their needs.
- Establish a follow-up mechanism for high-, medium-, and low-risk groups after screening vulnerable groups such as the people with minimum living allowance, people with disabilities, advanced-age persons, disabled elderly, and children in distress.
- Visit key follow-up groups more often.
- Establish health records for people with chronic diseases and provide them with escort services.
- Deliver epidemic prevention products to vulnerable groups at high risk.
- Reduce panic in communities through online activities.
- Coordinate volunteers to provide counselling and other services for children.



## Services of Social Workers in the Community

- ◀ Social workers visit home to measure blood pressure for the elderly living alone with minimum living allowance.



Social workers assist the disabled with drug management and supervision. ▶





# Our Reflections

1



Social work station should establish emergency response mechanism.

2



Social workers should play the role of policy linkers, resource mobilizers, service providers, and supporters of vulnerable groups, linking government policies to the community, coordinating government-community relations, and intervening immediately if needed.

3



Social worker's values: people-oriented, adhering to social worker's ethics, and professional participation.

4



Vulnerable groups come first. The social support network and economic foundation of the vulnerable groups are relatively poor, so they are more vulnerable in the pandemic.

5



Leverage professional perspective to accompany objects with empathy and help them out of trouble .

6



Follow-up of the pandemic, especially focusing on “destigmatization” and “de-labeling”. Patients and recoverers are often excluded by the community and we should try community education intervention.



**Where there is a pain, there is a gain.**

**Where there are ties of affection,  
there are social workers!**

**THANK YOU!**